

Short walks in and near

# Blockley

with (or without!) dogs

Produced by Dogley: Blockley Dog Buddies



Hello. Thanks for reading/buying/borrowing this booklet! For months after I moved to Blockley with my 3 dogs I didn't know where I could take them for walks in and near the village. I was such a city person, and hopelessly map and signage illiterate. And I often see visitors with their dogs walking in small laps because they also don't know where to go. I'm very grateful to friends who have introduced me to walks and taught me to map-read and now enjoy fabulous walks in and near Blockley.

This is a collection of short, mainly 'there and back', hard to get lost walks. Most of them can be extended by following the longer, more detailed, circular walks in the Heritage guide. This is on sale in the village shop, along with other local books and maps.

The Dogley website has a free downloadable version of the booklet, additional walks, videos, links to Ordnance Survey routes and more!  
[www.helpily.org/dogley](http://www.helpily.org/dogley)

Biggest possible thanks to Tanya for the glorious design during the most difficult of circumstances.

Marion Janner  
Blockley May 2022



This booklet is produced in loving memory of Buddy who had such a joyous last few years of her life here in Blockley with Pearl and Skippy.



# Contents

<b>Introduction</b>	<b>6</b>
Animal safety	6
Keeping Blockley beautiful	7
Where is it OK to walk?	8
Making the most of your walk	9
<b>The main dog walks in Blockley</b>	<b>10</b>
1. Norcombe Wood	12
2. Deer Park	13
3. Fields at top of Bell Bank	14
4. Dovedale Plantation and Bourton Wood	15
5. Pasture Lane #1, shorter	16
6. Pasture Lane #2, via Holly Walk	17
7. Park Farm to Batsford	18
8. Pavements and brooks	19
<b>Lovely walks near Blockley</b>	<b>20</b>
9. Holly Walk, via Downs Farm	22
10. Batsford to Moreton	24
11. Broadway Tower	25
12. Dovers Hill	26
<b>Secure fields</b>	<b>27</b>
13. Evesham Dog Walking Field	28
14. Liberty Orchard, Haresfield	28
15. Ettington Dog Walking Meadows	29
16. River Meadow	29
17. E&P Secure Dog Walking Field	30
18. Canine Acres	30
19. Merlin's Meadow	31
<b>Fun places to visit with dogs</b>	<b>32</b>
<b>Links</b>	<b>34</b>
<b>Notes</b>	<b>38</b>



# Introduction

## ANIMAL SAFETY



The only really safe place to walk your dog off the lead, without any risk of encountering sheep, cows, pheasants, horses, and other animals large and small are secure fields, several of which are included in the booklet. You can be on a long walk on a Tuesday and there be no other animals at all, and go back on Wednesday to discover the field is now full of happily munching sheep/cows. And a very common experience is to enter one field and it's empty so it seems safe to let your dog off the lead, but round the next corner (or at the end of a sloping field for example) suddenly there is a large flock/herd, potentially creating extreme danger if your dog is still off lead. So it is always best to keep our dogs on the lead.

This shouldn't really need saying but ... particularly around lambing time, lots of fields have signs asking people to keep



dogs on a lead even if the fields are apparently empty, and it is essential that we do this. Bigger dogs can chase and cause ewes to abort their lambs, especially if running loose before their owner has noticed them. So even if a dog hasn't actually physically attacked a sheep or lamb (which does sadly occur often), the stress of having a dog running around near them can also cause catastrophic harm to wildlife. And Chris Packham writes compellingly about the harm done to ground-nesting birds.

Finally, most people always close every gate they go through, but to keep livestock safe this needs to be done by everyone, every time.



## KEEPING BLOCKLEY BEAUTIFUL



The vast majority of people in and around Blockley pick up our dogs' poo whether it's on a pavement, in a park, in the woods or in fields. Always and everywhere. And because we all sometimes "miss a dollop" if we've taken our eyes off our dog even for a few seconds, or the poo is camouflaged in leaves or we've discovered that our pockets which usually bulge with poo bags are, yikes, empty – lots of us also pick up any dog poo we see. This really helps keep Blockley clean, stops people posting angry messages on social media, and off-sets our own occasional mishaps. There are dog bins throughout the village and

it's also fine to put bagged poo into regular bins.

Thank you in advance to visitors to Blockley who not only pick up and bin their own dogs' poo but any other they might come across, along with the occasional crisps' wrapper or other litter.



# WHERE IS IT OK TO WALK?

---  
All the walks in this booklet are on public footpaths or other routes where there is a public 'right of way'. The law around all this is very complicated and there are links

at the end of the booklet. But at its simplest, look out for the most common signs which show that it's OK to walk on those paths:



Where the arrows are pointing on signposts isn't random! For example, in the photo of the signs, it shows that the public footpaths go diagonally to the left and also straight to the right. The Northwick Estate sign shows how confusing signs can be. It means that although it is private land, there is a public right of way on specific footpaths. If you're



using an Ordnance Survey map/app (and kudos for doing so!), the public footpaths are marked, with explanations in the 'key'.





# MAKING THE MOST OF YOUR WALK

---

My experience of walking with (or without) my dogs has been transformed by reading Nick Baker's book *Rewild*. He describes vividly how to enjoy the outdoors on a multi-sensory level – not just the sights but also the sounds, smells, textures etc. And for your dogs, you can find online all sorts of ideas for making walks even more enjoyable and beneficial for them. There are links at the end covering ideas about scent-based games, teaching fun tricks, having playdates – or some doggy ice-cream on a hot day!



It took me years to really appreciate how important it is for dogs to sniff their way along a walk, and for me to become patient about waiting til they'd checked out the smells that apparently contain lots of fascinating doggy details. (Sometimes referred to as 'pee-mails', those in the know say that dogs can tell facts such as age, gender, size etc of the dog who did the pee. I can't understand how that can be, but there's no doubt that it is satisfying and stimulating for them to do all that sniffing.)



For me, having the right kit on walks makes a big difference. Obviously poo bags – always a spare roll so I don't run out and so I can pick up any stray poos I see. 'Dicky bag' (sort of portable poo bin so I'm not clutching bags), folding walking stick as some of the walks can be extremely muddy (and steep and muddy!), OS map app on my phone and assorted other stuff.

# The main dog walks in Blockley



With huge thanks to  
Jen Degnan for the gorgeous map

---



1. Norcombe Wood – top of Park Road
2. Deer Park – top of Park Road
3. Fields at the top of Bell Bank
4. Bourton Woods – far end of High Street
5. Pasture Lane #1
6. Pasture Lane #2
7. Park Farm to Batsford
8. Pavements and brooks

# I.

## NORCOMBE WOOD - TOP OF PARK ROAD



Past the school on the left, up to where the Park Road houses end, you cross the road and go over the stile.

### 1. Over the stile.



### 2. Head left between trees.



### 3. Head diagonally left to corner of field where you'll see path into woods



We take the 'most public' footpath through the woods, which is on the right. We usually walk for about 20 minutes along that path, turn round and come back. There are various circular options, eg via Upton Wold.

More details & info at [www.helpily.org/dogley](http://www.helpily.org/dogley)

## 2.

## DEER PARK - TOP OF PARK ROAD



Top of Park Road furthest from village centre, there are two sets of gates on the right just after the houses. Go through metal gate, follow muddy path down the slope, with fence to your right, to bottom right corner. The deer might be there (a magnificent sight) or in a nearby field, so dogs should be on leads.

In front of you there's locked metal gates; turn right into next field, with fence to your left. After a few minutes, go through another metal gate in the corner and then over the stile. (There's room for dogs to duck under it.) Follow footpath through woody area, across teeny wooden bridge and then along left of the field. After a couple of minutes there's a gap in the fence with a footpath sign. Turn right onto the gravelly road. (Watch out for cars.) This passes Keepers Cottage and soon reaches the main road, opposite Mill House. Turn right, walking along Station Road, past the fabulous Sports & Social Club grounds, back into the village.



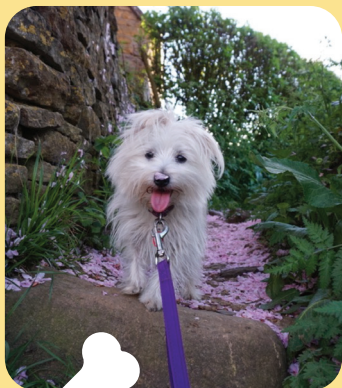
More details & info at [www.helpily.org/dogley](http://www.helpily.org/dogley)

### 3. FIELDS AT THE TOP OF BELL BANK, IN CHAPEL LANE

---

At the top of the very steep (walk don't drive!) Bell Bank, just to the right of the large house in front of you you'll see a poo bin and steps up to the fields.

As there are crops growing, there are never sheep or cows but there are often pheasants. The public footpath is very clear and after about 5 minutes, where Days Lane is off to the left, there is a parallel bridleway. Just before the farmhouse (Dovedale Farm) on the right, there is a public path going left through the fields, that goes up to Upton Wold, where the gardens are sometimes open to the public.



More details & info at [www.helpily.org/dogley](http://www.helpily.org/dogley)

## 4. DOVEDALE PLANTATION & BOURTON WOODS - FAR END OF HIGH STREET

---

Go right along the High Street, past Crown Hotel on your right, and after Fish Cottage on the right and electricity sub-station on the left, there is a gate leading to the woods. As these are woods rather than fields, there aren't cows or sheep but still lots of pheasants, and sometimes shooting. Through the gate and then a stream (brook?) runs along the left. I keep to the main path and follow it round, turn around and come back.

The official information, on signs in the woods and on the Batsford Estate website says: *Despite Bourton Wood being private, it is possible to obtain an annual walking permit for you and your household to enjoy the beautiful changing season in the wood....Permits can be obtained by completing the request form and calling into The Estate Office. It is possible that not every person walking in the woods has obtained a permit and I'm not aware of stringent checks.*



More details & info at [www.helpily.org/dogley](http://www.helpily.org/dogley)

5.

## PASTURE LANE #1, OFF LOWER STREET. SHORTER WALK



On Lower Street heading out of the village, go very very carefully around the pavement-less bend by Lower Brook House, and turn left up Pasture Lane.

About 2 minutes up the lane, there's a wide metal gate and a foot-path sign to the left. Follow that little path, with fields to your left and stream to your right. About 10 minutes further along, go over a little wooden bridge, along the path next to the fields and farm on your right. You soon come to Draycott Road opposite The Dell, with surprisingly steep steps. Turn left. You can then turn left onto Station Road, back to the centre of the village. Or you can go straight across Station Road, through the cemetery gates.

The cemetery has a very moving section (top right) for Polish citizens who lived in the nearby Northwick Park resettlement camp after World War 2, from 1948 – 1969. At the top of the cemetery, turn left up the path to The Landgate, which takes you to Park Road. Turn left to get to village shop and café.



More details & info at [www.helpily.org/dogley](http://www.helpily.org/dogley)



6.

## PASTURE LANE #2, OFF LOWER STREET. LONGER WALK VIA HOLLY WALK



On Lower St exiting Blockley, going very carefully around the blind, pavement-less corner by Lower Brook House, and turn left up Pasture Lane. About 10 minutes along the steepish path, take the path to the right of the barn – it can be VERY muddy.

After about 10 minutes, the low stone wall to the right ends, turn right and go through the gate, so you're turning back in the direction you came. Keeping along this path, it turns into Holly Walk, with more great views of the village on the right. About 10 minutes along the path, go past a footpath on the left (into fields which are part of the Holly Walk walk). After a couple of minutes there's a stile on the right. Climb over that (small dogs can scramble between the gate and the stile), and into a muddy field which goes straight down to the village. Follow the footpath marker poles in the middle of the field, over another stile, past reservoir on left, through two gates and back onto Lower St. Turn right, again very carefully along the blind corner with no pavement.



More details & info at [www.helpily.org/dogley](http://www.helpily.org/dogley)

## 7. PARK FARM TO BATSFORD

Leaving the village on Lower St, go very very carefully around the pavement-less bend by Lower Brook House, past Pasture Lane. You walk along a narrow verge and then there's a left turn with footpath sign.



Go through gates and up a steep, often extremely muddy hill. You're doing a reverse version of the end of Walk 6, up to Holly Walk. There are usually sheep here, so dogs on leads. Follow the footpath markers up the fields, cross a tiny road (that leads to the farm on the left), and go up the path and then over the stile.

Turn left, onto Holly Walk, and after a few minutes go through the gate and turn right into the field. There's usually sheep in the next field (and be careful to keep a distance from the electric fence). There's a small track after the field, and then you cross the road. The path, with stone wall on your left, runs pretty much straight to Batsford, with the occasional well sign-posted wiggles. Some energetic people then continue from Batsford to Moreton, Walk 10.

More details & info at [www.helpily.org/dogley](http://www.helpily.org/dogley)

## 8. PAVEMENTS AND BROOKS

This walk is mainly along the High Street through the village, coming back past a couple of little stretches of the brook. Starting at shop and café, perhaps after yummy cream tea, turn left and head past church on left and Bell Bank on right, so you're on the High Street. Past The Crown pub/hotel and then Days Lane on the right, along the second raised pavement and down the steps.

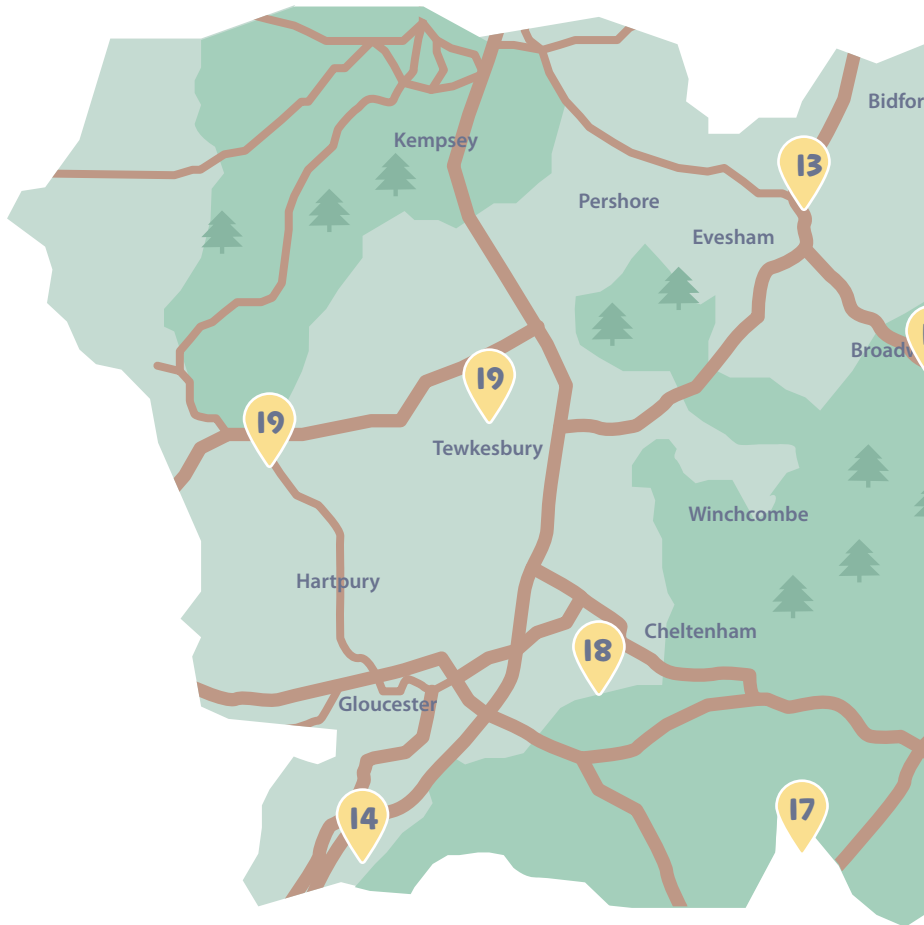
Cross the road to pathway between Dower House and Holland Cottage. The path becomes a bit steep. At the junction, there's a right turn to Bourton Woods but we're turning left to the brook. It's now slightly steep downhill. Past a few cottages there's a shallow 'entrance' to the brook, which lots of people use for their dogs to have a paddle and soak. At the end of the brook, path goes left to Brook Lane, up the hill to the High Street. Turn right and rather than returning to raised pavement, if you walk on the right by the road, you'll pass (or perhaps stop for a drink) at Russell Spring.

A few yards after Chapel Lane on the left, turn right onto pathway towards The Old Mill and curve left to the brook. At end of brook, turn left at No Entry sign and then right back onto High Street.



More details & info at [www.helpily.org/dogley](http://www.helpily.org/dogley)

# Lovely walks near Blockley and secure fields





9. Holly Walk, via Downs Farm
10. Batsford to Moreton
11. Broadway Tower
12. Dovers Hill
13. Evesham Dog Walking Field
14. Liberty Orchard, Haresfield
15. Ettington Dog Walking Meadows
16. River Meadow
17. E&P Secure Dog Walking Field
18. Canine Acres
19. Merlin's Meadow

9.

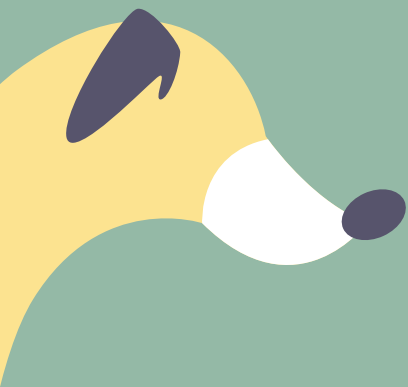
## HOLLY WALK, VIA DOWNS FARM



Go along Lower Street heading out of the village towards Bourton on the Hill, very carefully past Lower Brook House. After about a mile, there is the first turning on the left, marked with a signpost to Batsford and Aston Magna. Take that left turning, and a few hundred yards along there's a T-junction, where you turn left. About a quarter of a mile further along that road, there is a little parking area on the right, with enough room for two or three cars, and a gate on the right. There's a walk from there to Batsford described at the end of this one.



For the Holly Walk walk, cross the road to where the signpost is and follow the path to the right. The first field often has sheep in it, with an electric fence, so obviously it is essential to have your dog on the lead! The second field has crops, but again there are often sheep to the field on the left, so it is important to keep your dog on the lead.



At the end of that second field you come to a beautiful old stone wall, with a fabulous view of Blockley. There is a route back to Blockley by turning left – see Walk 6, Pasture Lane #2 walk. Holly Walk is the route off to the right, through lovely woods with a continuous view of Blockley on the left. There are often cows in the fields immediately the other side of the wall, and there can be gaps in the fencing, so you need to be really careful with your dogs. There is a lot of hidden wire, much of it rusty barbed wire where it has fallen into the vegetation near the path, on both sides. This is clearly a potential risk to your dogs (and off-piste kids...) so sticking to the path is very important. And there can often be sheep in fields to the right of the path, where much of it has no fencing/barrier at all.

The other walk from this spot is to Batsford (and then on to Moreton if you're feeling energetic.) You go through the gates on the right (on same side of the road where van is in the photo) and keep going for about half an hour til you come to the road which leads to Batsford Arboretum (if you turn left). You cross the little road and then you're onto the next walk – Batsford to Moreton.



More details & info at [www.helpily.org/dogley](http://www.helpily.org/dogley)

## 10.

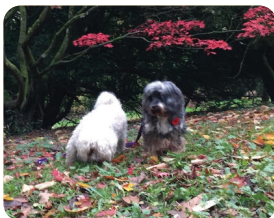
## BATSFORD TO MORETON

[www.batsarb.co.uk](http://www.batsarb.co.uk)

**Batsford, GL56 9AT**

You can park in the Arboretum car park (which is open when the Arboretum is – details on their website.) You walk back down the road towards the main road, past the house on the left and through the gate. Be sure to put the latch on afterwards! There are usually sheep in that field. Go straight ahead, keeping towards the hedge on the left. At the end of that field you can either go straight ahead (the bit leading to the gate gets incredibly muddy in the winter!) and pretty much keep going to Moreton, following the footpath and signs. Or there is a second gate in that field (marked with an arrow in the photo) which leads around the beautiful deer park. All the gates connecting the fields are either in the lefthand corner or in the middle of the fields. The last field (about number 13) is by the Caravan site and you go through the metal gate on the left and then turn right towards Moreton, going through a path by the allotments.

There's also a gate and path on the left, which goes past the incredible deer park.



The arboretum itself is fabulous and particularly spectacular in autumn with glorious red acers among other treats. Dogs are allowed on short leads. (Local residents who visit regularly will find an annual season tickets good value at about £35.)

More details & info at [www.helpily.org/dogley](http://www.helpily.org/dogley)





## BROADWAY TOWER



<https://broadwaytower.co.uk/>

**Middle Hill, Broadway WR12 7LB**

Top tip! (Info correct in 2022 but might change...) If you go there regularly, you can buy a car park ticket for the year for a tenner, from the shop. And another top tip! If you drive through the gates and instead of turning left into the car park, you drive straight on and then the road goes round to the right (marked Tower Barn), there's free car parking there and the café is much quieter than the main one and feels excitingly exclusive!

This is a fabulous place for a walk and a great cup of coffee, cakes or a delicious savoury snack. And even a bit of classy shopping. It's the highest spot in the Cotswolds and has spectacular views. There are often sheep in the fields and although usually deer are behind fencing, sometimes they aren't and dogs need to be on leads.

Our favourite walk is to the Tower, then to the right of it there's a gate and a path to the left or another gate straight ahead. We take the straight ahead route (often sheep around) and go up along with the wall (& quarry) on our right, through the next fields to the woods then turn around and come back down through the very dingly delly 'valley'.



More details & info at [www.helpily.org/dogley](http://www.helpily.org/dogley)

12.

## DOVERS HILL

---

<https://www.nationaltrust.org.uk/dovers-hill>

Weston Subedge, Chipping Campden GL55 6UW.

This is our favourite walk. Because of old age, disability, quiriness etc, my dogs can find it difficult to walk on pavements, and with this walk, the car park is right next to the start of the grassy, fieldy, sheepy, viewy walk. This National Trust area is beautiful with fantastic views. There is a map in the car park showing different walks, from a few minutes to an hour or so. You could take a photo if that helps with route finding.

We usually go along the first field (towards the sharp drop of the hill and spectacular views), turn right, meander along there for about 10 minutes to the steps, then at the bottom of the steps turn sharp left and walk (parallel to the route we've just done at the top) back to the path that goes left back up to the field next to the car park.



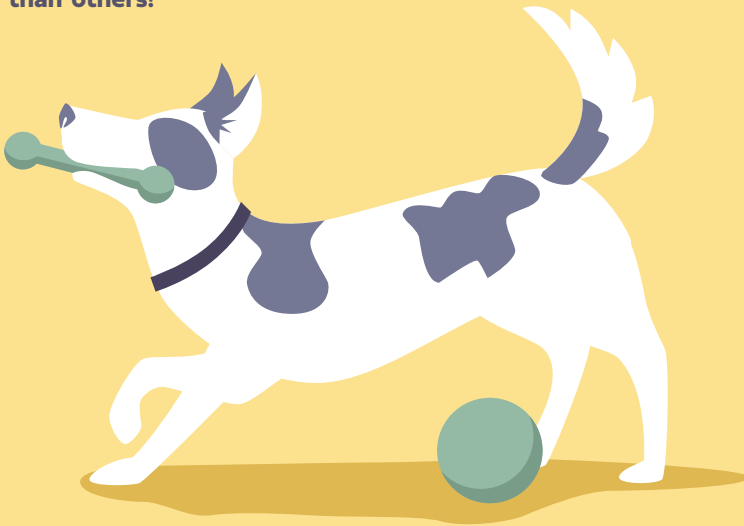
Buddy aged 16  
loving scampering  
around  
Dovers Hill

# Secure fields

Secure and private dog walking fields are fantastic if you would like somewhere your dog(s) can safely run around off lead for example because:

- ✓ They are nervous
- ✓ They have poor recall
- ✓ They need a private, safe space to train in
- ✓ They are female dogs who are on heat
- ✓ They have masses of energy and need a secure space to run around
- ✓ You want to be somewhere relaxing with them without needing to take into account other dogs or humans.

Unfortunately there aren't any secure fields in or very near Blockley but there are a few within about half an hour's drive. **NB Some are more secure than others!**



More details & info at [www.helpily.org/dogley](http://www.helpily.org/dogley)

## 13. EVESHAM DOG WALKING FIELD

---

Off A46, WR11 4TR

**eveshamdf@outlook.com**

**facebook:** <https://m.facebook.com/EDWF21>

Nearest to Blockley. 2 acres, high fences, various activities (eg tunnels and other agility features), very enthusiastic reviews on their website. Very friendly booking process.

## 14. LIBERTY ORCHARD, HARESFIELD

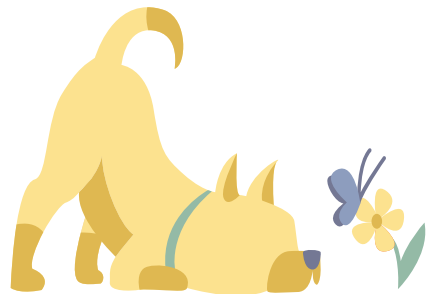
---

**<https://www.libertyorchard.net/>**

Haresfield, Stonehouse GL10 3DS

**libertyorchard-securefield@outlook.com**

This is a delightful field, with a great mixture of features (eg a variety of under-paw textures, stuff to clamber over, scramble through etc) and high fencing on all 4 sides.



15.

## ETTINGTON DOG WALKING MEADOWS



<https://ettingtondogwalkingmeadows.simplybook.it/v2/>

Grove Farm, Stratford Rd, Ettington, Stratford-upon-Avon CV37 7NX  
07774 776682

[bookings@ettingtondogwalkingmeadows.co.uk](mailto:bookings@ettingtondogwalkingmeadows.co.uk)

These huge, varied fields and woodlands are highly recommended by Dogley members and there is also an indoor play barn which sounds wonderful. See website for info about each area's level of security and challenge.

16.

## RIVER MEADOW



<https://walkiees.co.uk/dog-walks/warwickshire/river-meadow-dog-walking>

Clifford Chambers, Nr. Stratford on Avon, CV378HR  
01789 266253

<https://www.facebook.com/RiverMeadowDogWalking/>

This lovely site is not fully secure as the 4th boundary is a little river! The fields are large enough for dogs who have good recall or stay close to their humans to be a safe distance from the river. But risky for others.



More details & info at [www.helpily.org/dogley](http://www.helpily.org/dogley)

17.

## EGP SECURE DOG WALKING FIELD



<https://www.epsecuredogwalkingfield.co.uk/>

Chedworth, Cheltenham GL54 4NF

They have a superb video on their website showing you how to find the field.

Lucy on: **07958 333157** or Giles **07773 721729**

**dogwalkingcotswolds@gmail.com**

This is safe and basic, with stunning sunsets in winter.

18.

## CANINE ACRES



<https://www.canineacres.co.uk/>

Canine Acres Dog Walking field, near Leckhampton,  
Cheltenham, GL51 4XT

Fiona **07940 539690**

**fiona@canineacres.co.uk**

**facebook:** <https://www.facebook.com/Canine-Acres-dog-walking-field-2376614185933121/>

Nine acres, enclosed with deer fence all round and has agility kit big enough for giant dogs!

19.

## MERLIN'S MEADOW

<https://www.merlins-meadow.com/>

Tewkesbury site: Merlin's Meadow, Lode Lane, Bushley, GL20 6HP

Redmarley site: Merlin's Meadow, Bromsberrow Road, Redmarley, GL19 3NB

**07963 553180**

**facebook:** facebook.com/merlins.meadow

Tewkesbury is 16 acres and Redmarley site 10 acres. All fencing and gates are 6ft and parking is onsite. There are plenty of activities to enjoy, including: agility jumps and tunnels, straw bales to explore, sand pits to play in.



More details & info at [www.helpily.org/dogley](http://www.helpily.org/dogley)

# Fun places to visit with dogs

The Cotswolds is a very dog-friendly area! Dogs are welcome in most shops and cafes, and in lots of hotels, rental cottages etc. Here are some places to visit which (in some cases rather surprisingly) are happy for dogs on leads to come too.

Bourton on the Water is an intensely pretty (and therefore usually heavily visited!) town with several attractions which allow dogs, as well as the many delightful cafes, pubs, hotels etc.



## **Cotswold Motoring and Toy Museum**

<https://www.cotswoldmotoringmuseum.co.uk/>

Surely the best and most exuberant museum in the world? Crammed with exquisite vintage cars, motoring memorabilia, the original Brum off the TV, model cars, old caravans and so much more.



## **Birdland**

<https://www.birdland.co.uk/>

Pelicans, parrots, plovers and lots of birds from elsewhere in the alphabet, in beautiful gardens.



## **Greystones Farm**

<https://www.gloucestershirewildlifetrust.co.uk/nature-reserves/greystones-farm>

Beautiful and environmentally important nature reserve



## Elsewhere in the Cotswolds:



### **Cotswold Wildlife Park**

<https://www.cotswoldwildlifepark.co.uk/>

Your dogs can get up close to lions, penguins, meerkats.... The gardens are fabulous, and dogs on leads are allowed most places other than the lemur enclosure, reptile house etc.



### **Cotswold Farm Park**

<https://cotswoldfarmpark.co.uk/>

Although dogs aren't allowed into the rare breeds Farm Park itself, they welcome dogs on their 2 mile wildlife walk, in the shop, cafe and restaurant and staying with their humans on the Park's glamping site. Famously home of Adam Henson of Countryfile and farming and countryside advocacy and rare breed conservation.



### **Gloucestershire Warwickshire Steam Railway**

<https://www.gwsr.com/>

Dogs are allowed on these magnificent vintage trains, with some very reasonable conditions (maximum numbers etc.) which are detailed on the website.



### **Cotswold Lavender**

<https://www.cotswoldlavender.co.uk/>

Near Blockley and open summer months – check website before visiting. Luscious fields of lavender to walk in and a shop selling all things lavenderial.

# Links

## This booklet!

Print copies from fab Blockley Village Shop, Bell Lane, GL56 9BB  
**Free downloadable booklet, short videos, links to Ordnance Survey routes & additional walks:** [www.helpily.org/dogley](http://www.helpily.org/dogley)

## Health emergency for holiday dogs

**Stow vets are great and see dogs away from home, not registered with them**  
[www.stowvets.co.uk](http://www.stowvets.co.uk) 01451 830620  
24/7 online advice [www.firstvet.com](http://www.firstvet.com)

## Local pet shop

**Pet Necessities**, High St (corner of New Road), High St, Moreton-in-Marsh  
GL56 0AX. 01608 651109

## Other books etc of local walks

### **Heritage Rambles Around Blockley and other books about Blockley history – from village shop.**

Greystone Farm has details of walks near to them. The walks are displayed on a noticeboard at the farm, on their website ([www.greystonefarmcaravansite.co.uk](http://www.greystonefarmcaravansite.co.uk)) and in a leaflet from The Little Farm Shed

## Dogley - Blockley Dog Buddies

**Easiest to do search on Facebook or click on** <https://www.facebook.com/groups/370258350697579>

## Animal safety

<https://www.countrysideonline.co.uk/care-for-the-countryside/dog-walking/>



## Picking up dog poo, always, everywhere

<https://www.helpily.org/job-done.html>

Walk-transforming portable 'poo bin' bags <https://www.dickybag.com/>

## Public rights of way

<https://www.ramblers.org.uk/advice/paths-in-england-and-wales/types-of-path/know-your-signs.aspx>

<https://www.ordnancesurvey.co.uk/newsroom/blog/right-to-roam-public-rights-of-way>

## Making the most of your walks

<http://www.nickbaker.tv/new-book-rewild-art-returning-nature/>

<https://maddies-dog-academy.medium.com/enriching-walks-for-your-dog-150c1fb25b17>

## Walks

**Good but slightly outdated map of Blockley with the main buildings etc marked** <https://sites.rootsweb.com/~engblock/locator.html>

**Fabulous (even though outdated...) selection of short walks around Blockley, with photos and a bit of history about some of the houses and buildings**

<https://sites.rootsweb.com/~engblock/tours.html>

**These are long walks, about 4 – 10 miles** <https://www.komoot.com/guide/1684346/hiking-around-blockley>

**Walks near to Blockley (& everywhere else in UK)**

<https://walkies.co.uk/>

## **Books – ideally bought from a local bookstore eg Borzoi in Stow**

Countryside Dog Walks: Cotswolds

Dog Friendly Pub Walks: Cotswolds

## **Places**

### **Batsford Arboretum**

[www.batsarb.co.uk](http://www.batsarb.co.uk) Batsford, GL56 9AT

### **Broadway Tower**

<https://broadwaytower.co.uk/> Middle Hill, Broadway WR12 7LB

### **Dovers Hill**

<https://www.nationaltrust.org.uk/dovers-hill> Weston Subedge, Chipping Campden GL55 6UW

### **Moreton in Marsh**

<https://www.cotswolds.info/places/moreton-in-marsh.shtml>

## **Secure/private/fun fields**

### **Evesham Dog Walking Field**

<https://m.facebook.com/EDWF21>

### **Liberty Orchard**

<https://www.libertyorchard.net/>

### **Ettington Dog Walking Meadows**

<https://ettingtondogwalkingmeadows.simplybook.it/v2/>

### **River Meadow**

<https://walkiees.co.uk/dog-walks/warwickshire/river-meadow-dog-walking>

### **E&P Secure Dog Walking Field**

<https://www.epsecuredogwalkingfield.co.uk/>

### **Canine Acres**

<https://www.canineacres.co.uk/>

### **Merlins Meadow**

<https://www.merlins-meadow.com/>

## Fun places to visit with dogs

**A good source of visitor attractions is**

<https://www.dogfriendlycotswolds.co.uk/>

**Cotswold Motoring and Toy Museum**

<https://www.cotswoldmotoringmuseum.co.uk/>

**Birdland**

<https://www.birdland.co.uk/>

**Greystones Farm**

<https://www.gloucestershirewildlifetrust.co.uk/nature-reserves/greystones-farm>

**Cotswold Wildlife Park**

<https://www.cotswoldwildlifepark.co.uk/>

**Cotswold Farm Park**

<https://cotswoldfarmpark.co.uk/>

**Gloucestershire Warwickshire Steam Railway**

<https://www.gwsr.com/>

**Cotswold Lavender**

<https://www.cotswoldlavender.co.uk/>

**Designed by**

**Tanya Tashkinova**

[tashkinovatanya@gmail.com](mailto:tashkinovatanya@gmail.com)









**Thank you**  
**Blockley!**